



TEST REPORT
ON
1.7 TO 18.3 GHz
SINGLE POLE EIGHT THROW
REFLECTIVE PIN DIODE SWITCH

AMC MODEL No:
MSN-8DR-06-DEC-SP
OPTION 10719, B05, LVT-COM

Serial Numbers: 8MS91196 THRU 8MS911101

DESIGNED
BY
Dr. A. Gorwara

TESTED
BY
R. Afable

REPORTED
BY
E. Elder

October 21, 2004

AMERICAN MICROWAVE CORPORATION., 7311-G Grove Road, Frederick, MD 21704
Tel: 301-662-4700 • Fax: 301-662-4938 • Email: sales@americanmicrowavecorp.com
Website: <http://www.americanmicrowavecorp.com>

ISO9001 : 2000 CERTIFIED

JEM JOT
DRH
RA
RW
myB

TABLE OF CONTENTS

●	PRODUCT DESCRIPTION AND ELECTRICAL SPECIFICATIONS	PAGE 3
●	PRODUCT FEATURE AND ENVIRONMENTAL SPECIFICATIONS	PAGE 4
●	MECHANICAL OUTLINE	PAGE 5
●	FUNCTIONAL SCHEMATIC	PAGE 6
●	TEST DATA ON MSN-8DR-06-DEC-SP OPTIONS 10719, HPR5W, LVT-COM SERIAL NUMBERS 8MS91196 THRU 8MS911101	PAGE 7
●	TEST DATA FOR MSN-8DR-06-DEC-SP OPTIONS 10719, HPR5W, LVT-COM SERIAL NUMBERS 8MS91196	PAGE 8
●	TEST DATA FOR MSN-8DR-06-DEC-SP OPTIONS 10719, HPR5W, LVT-COM SERIAL NUMBERS 8MS91197	PAGE 9
●	TEST DATA FOR MSN-8DR-06-DEC-SP OPTIONS 10719, HPR5W, LVT-COM SERIAL NUMBERS 8MS91198	PAGE 10
●	TEST DATA FOR MSN-8DR-06-DEC-SP OPTIONS 10719, HPR5W, LVT-COM SERIAL NUMBERS 8MS91199	PAGE 11
●	TEST DATA FOR MSN-8DR-06-DEC-SP OPTIONS 10719, HPR5W, LVT-COM SERIAL NUMBERS 8MS911100	PAGE 12
●	TEST DATA FOR MSN-8DR-06-DEC-SP OPTIONS 10719, HPR5W, LVT-COM SERIAL NUMBERS 8MS911101	PAGE 13

**SINGLE POLE EIGHT THROW
REFLECTIVE PIN DIODE SWITCH
AMC MODEL No:
MSN-8DR-06-DEC-SP OPTIONS 10719, B05, LVT-COM**

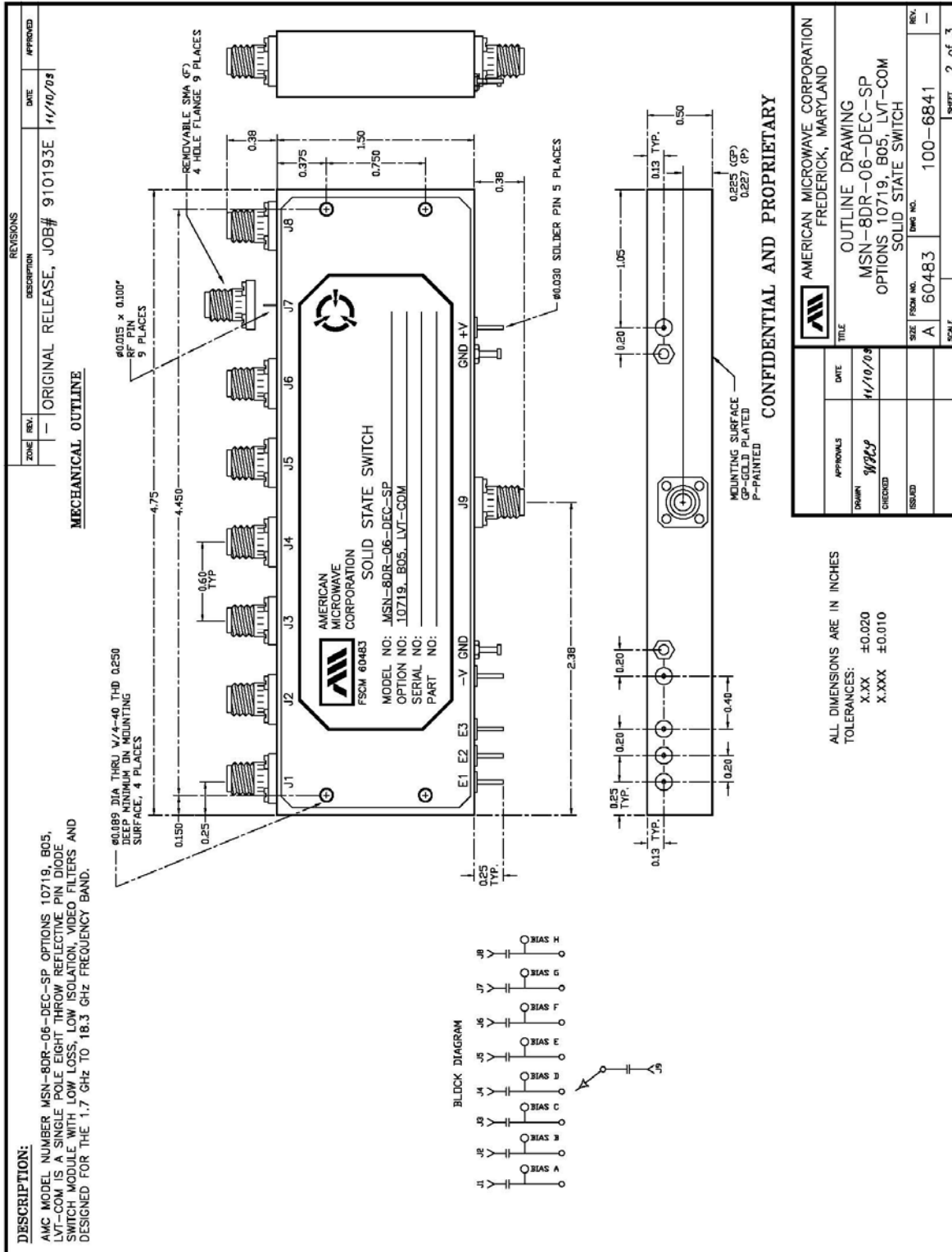
FEATURES:

- **1.7 TO 18.3 GHz FREQUENCY RANGE**
- **2.0 dB MAXIMUM LOW INSERTION LOSS**
- **20 dB MINIMUM LOW ISOLATION**
- **DESIGNED WITH VIDEO FILTERS**

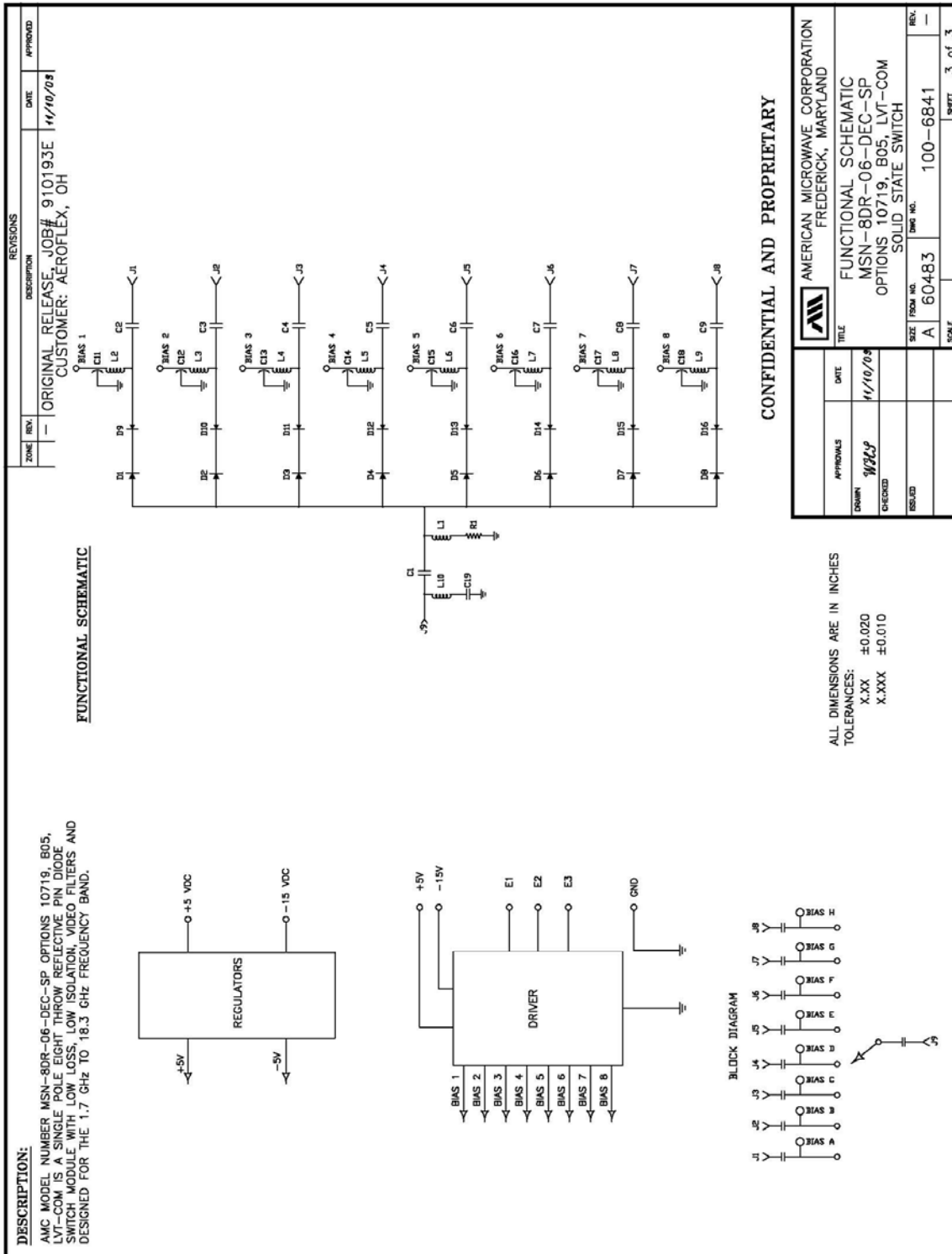
SPECIFICATIONS:

- | | | |
|------------------|---|--|
| ● FREQUENCY | : | 1.7 TO 18.3 GHz |
| ● INSERTION LOSS | : | 2.0 dB MAXIMUM, 1.5 dB TYPICAL |
| ● ISOLATION | : | 20 dB MINIMUM |
| ● VSWR | : | 1.75:1 |
| ● SPEED | : | RISE: 30 nsec MAXIMUM, 20 nsec TYPICAL
FALL: 30 nsec MAXIMUM, 20 nsec TYPICAL |
| ● POWER INPUT | : | (CW)+20 dBm (STANDARD), +10 dBm (HIGH SPEED) |
| ● SURVIVAL POWER | : | 1 WATT CW, 10 WATTS PEAK 1 usec |
| ● CONTROL | : | TTL LOGIC "0"=ON, "1"=OFF |
| ● POWER SUPPLY | : | +5V @ 400 mA MAXIMUM
-5V @ 75 mA MAXIMUM |

OUTLINE DRAWING



FUNCTIONAL SCHEMATIC



FINAL TEST DATA

FINAL TEST DATA SHEETS

FOR

AMC MODEL NUMBER

MSN-8DR-06-DEC-SP
OPTION 10719, B05, LVT-COM

Serial Numbers:

8MS9196 THRU 8MS911101

